

# ***THE WATER AND ENERGY NEXUS A COMMUNITY OPPORTUNITY***

*PRESENTED BY:*

**Jonathan R. Tijerina**  
VP, Enterprise Risk & Development

**Steven M. Clouse**  
Senior VP/Chief Operating Officer

September 21, 2022

# AGENDA



- **CPS ENERGY & SAWS PARTNERSHIP**
- **CONNECT H2O PROGRAM**
- **HISTORY OF ENERGY & WATER NEXUS**
- **FUTURE OPPORTUNITIES**

**Support for this partnership allows us to move forward with a resiliency option for our community partner.**

# CPS ENERGY / SAWS PARTNERSHIP



Track record of collaboration and partnership:

- Enhanced communication and outreach during storm and system outages
- Energy efficiency and demand response
- Joint data center collaboration
- Economic development activity

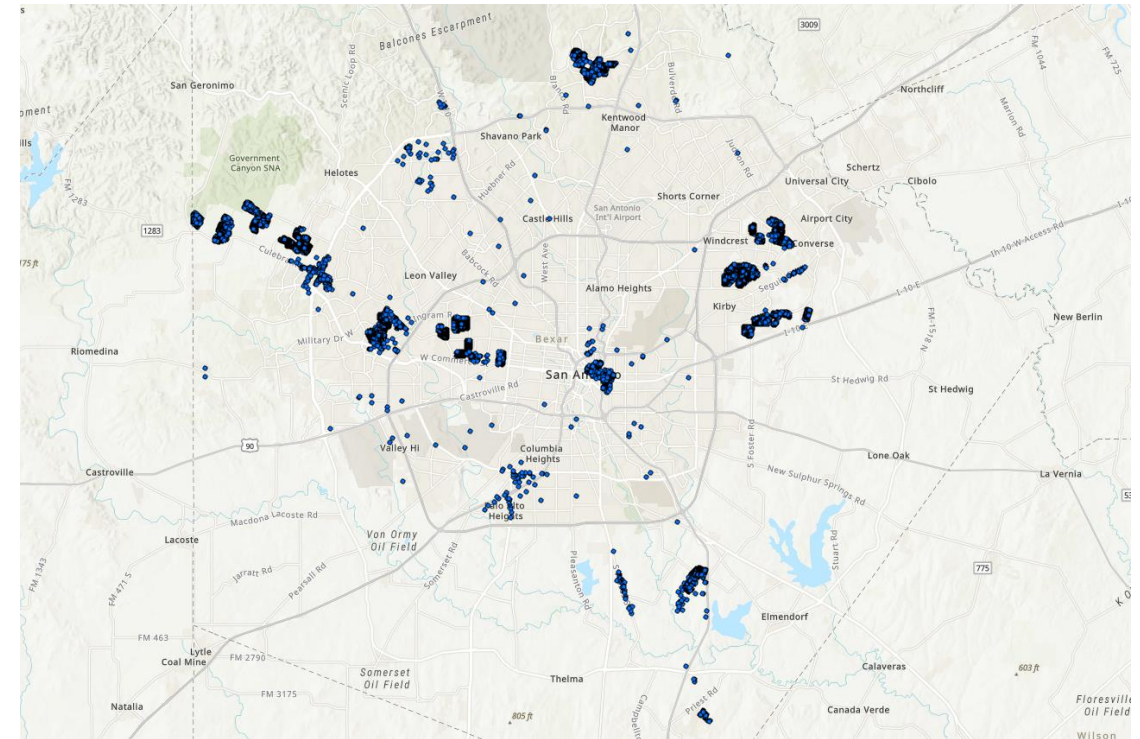


**CPS Energy & SAWS have a track record of partnership that maximizes value to our community.**

# ConnectH2O Program

## Advanced Meter Infrastructure (AMI)

- CPS Energy's mesh network provided to SAWS through Intron
  - Provides a highly reliable communication network
  - Cost effective for SAWS and provides a source of revenue for CPS Energy
  - Enables SAWS to deploy AMI meters both geographically in large quantities and on an individual basis to meet operational objectives



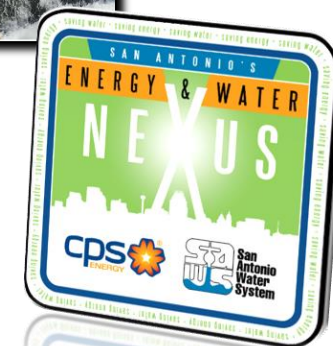
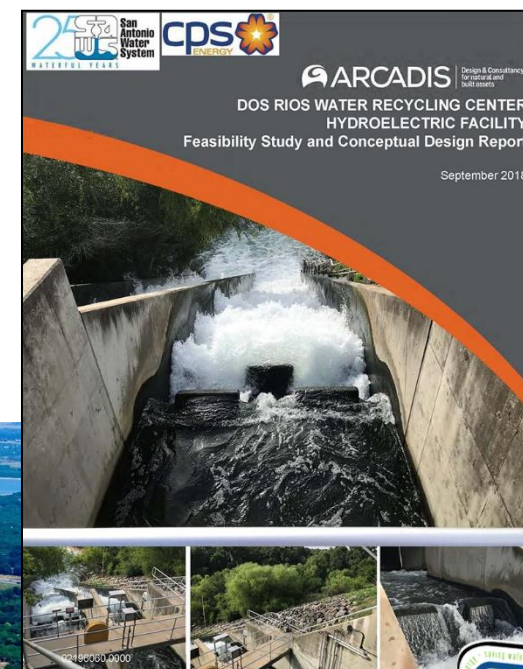
Nearly 18,000 electronic meters deployed

Day 1 delivery rate = 99.05%

Day 2 delivery rate = 99.74%

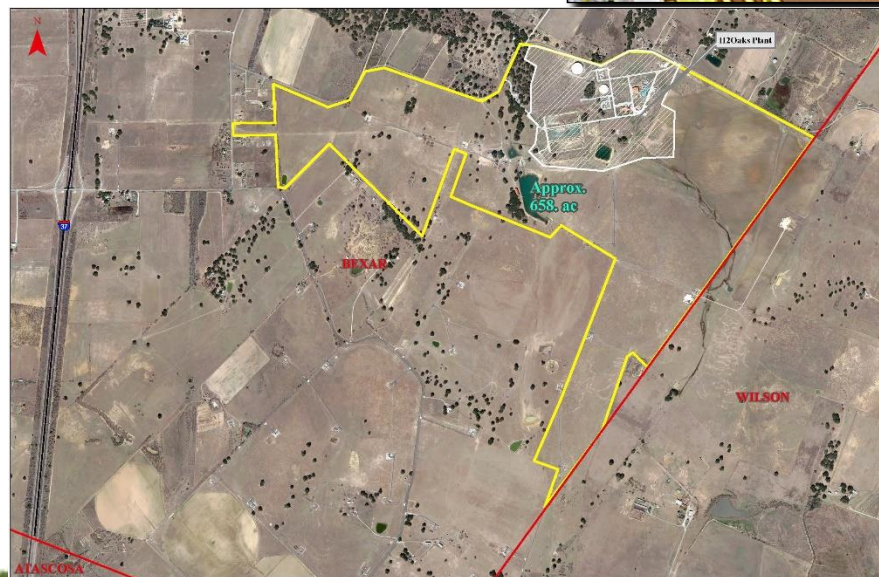
# A history of nexus opportunities

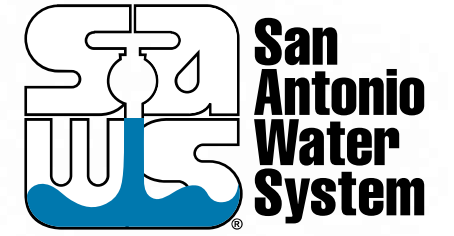
- Evaluation of hydropower opportunity
- Coordination for establishing solar facilities
- Recycled Water Program
- Conservation programs



# A future of nexus opportunities

- Expanded solar opportunities at 3 locations
- Chilled water thermal storage
- Expanded demand response opportunities
- Continued Emergency response improvements





***Thank You***